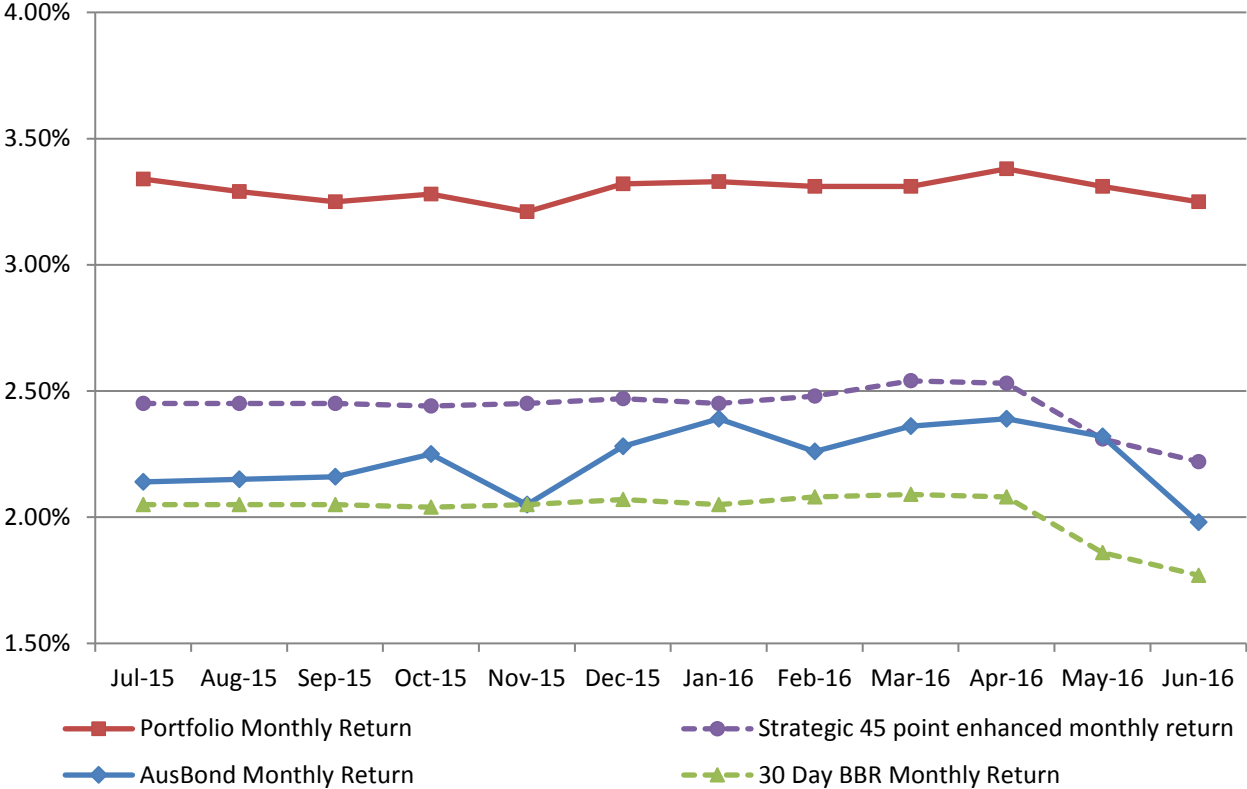


ATTACHMENT B

**INVESTMENT PERFORMANCE
AS AT 30 JUNE 2016**

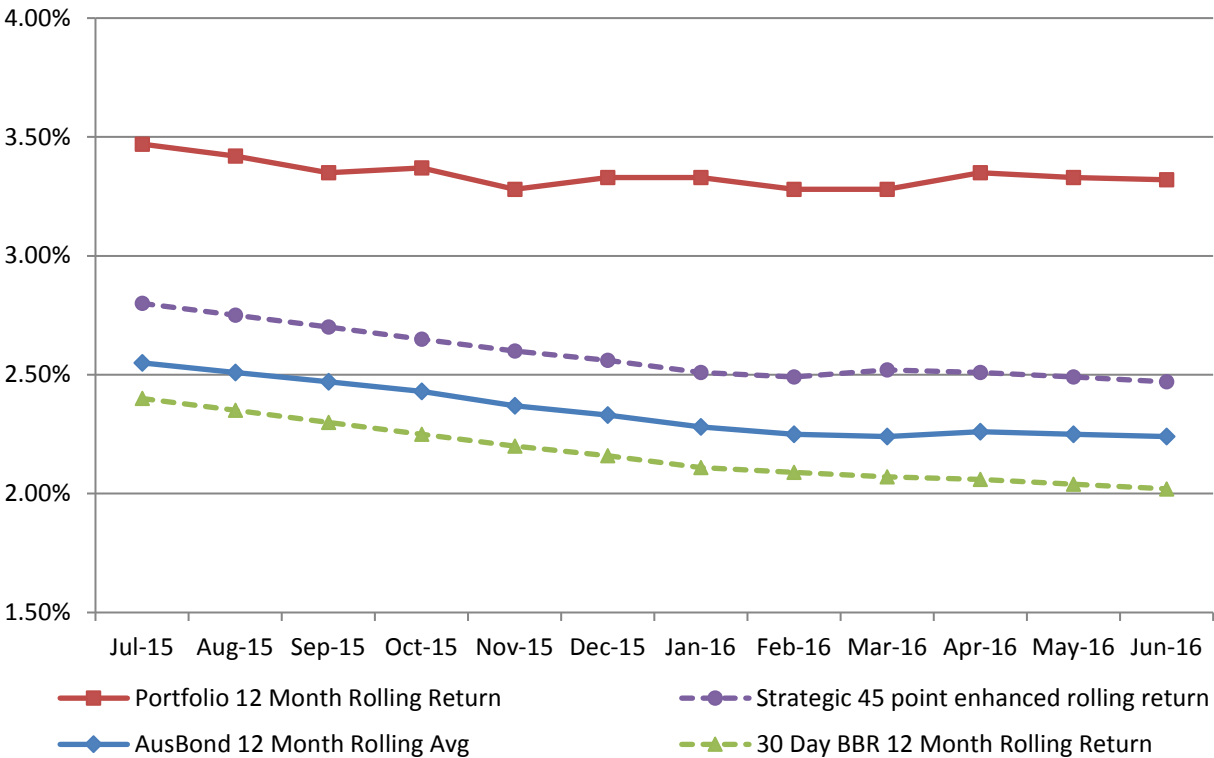
Monthly Results

Actual Portfolio vs Strategic Enhanced Benchmark vs AusBond Benchmark vs 30 Day BBR Benchmark
June 2016



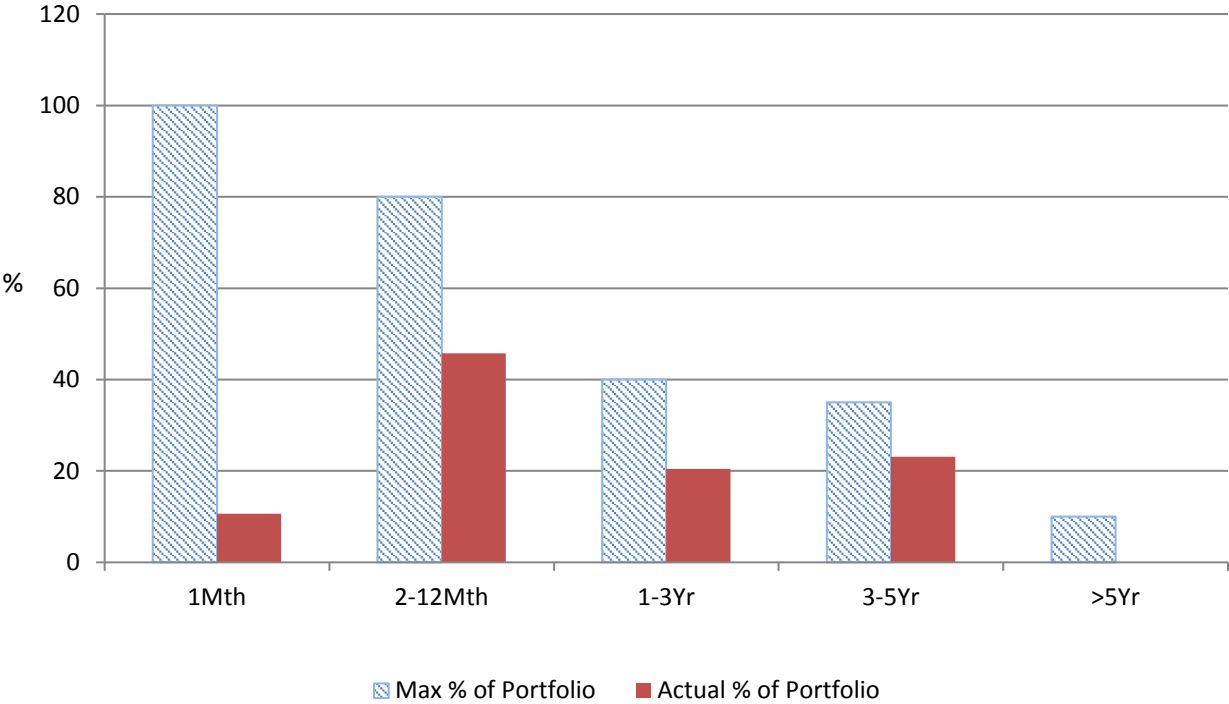
12 Month Rolling Averages

Actual Portfolio vs Strategic Enhanced Benchmark vs AusBond Benchmark vs 30 Day BBR Benchmark
June 2016

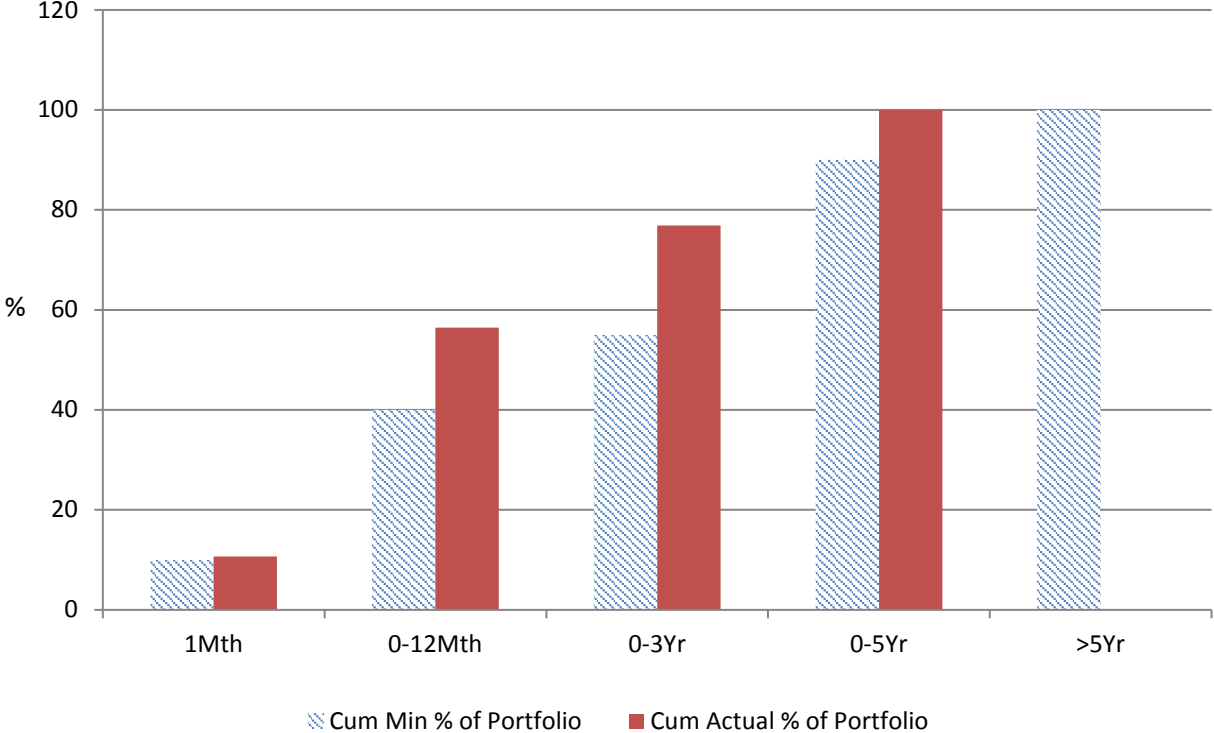


ATTACHMENT B

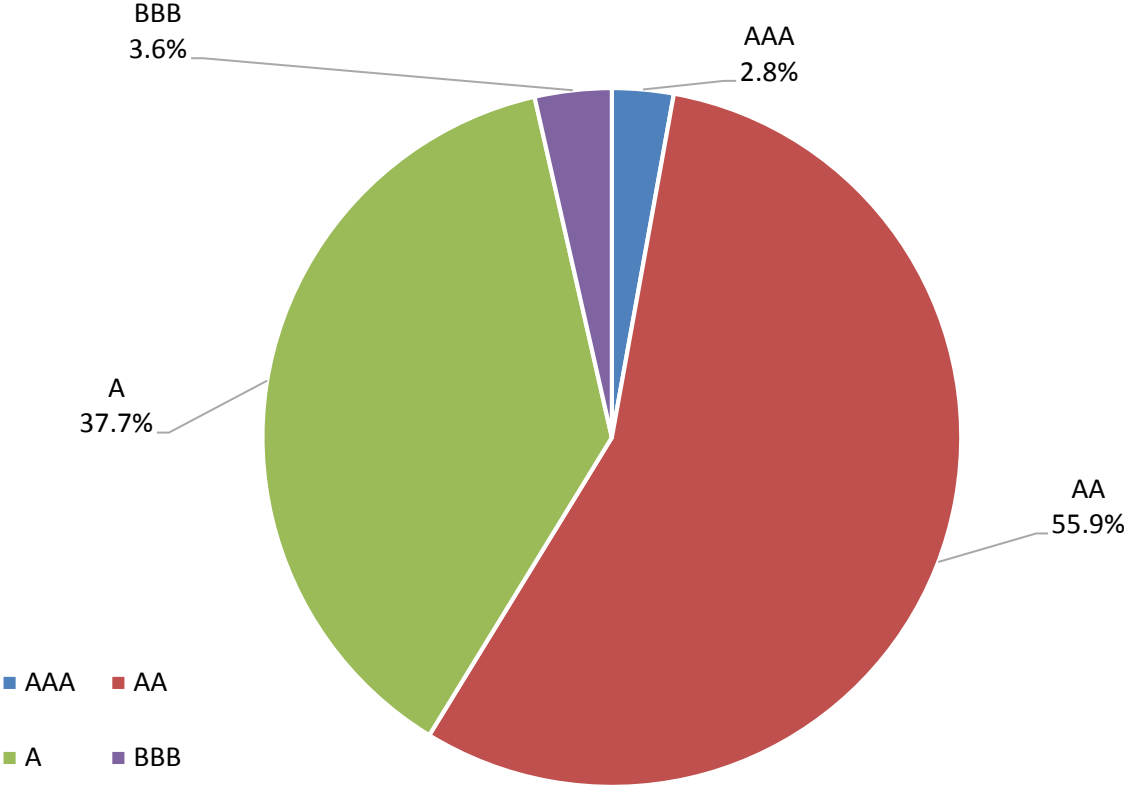
% Liquidity - Maximum Allowances



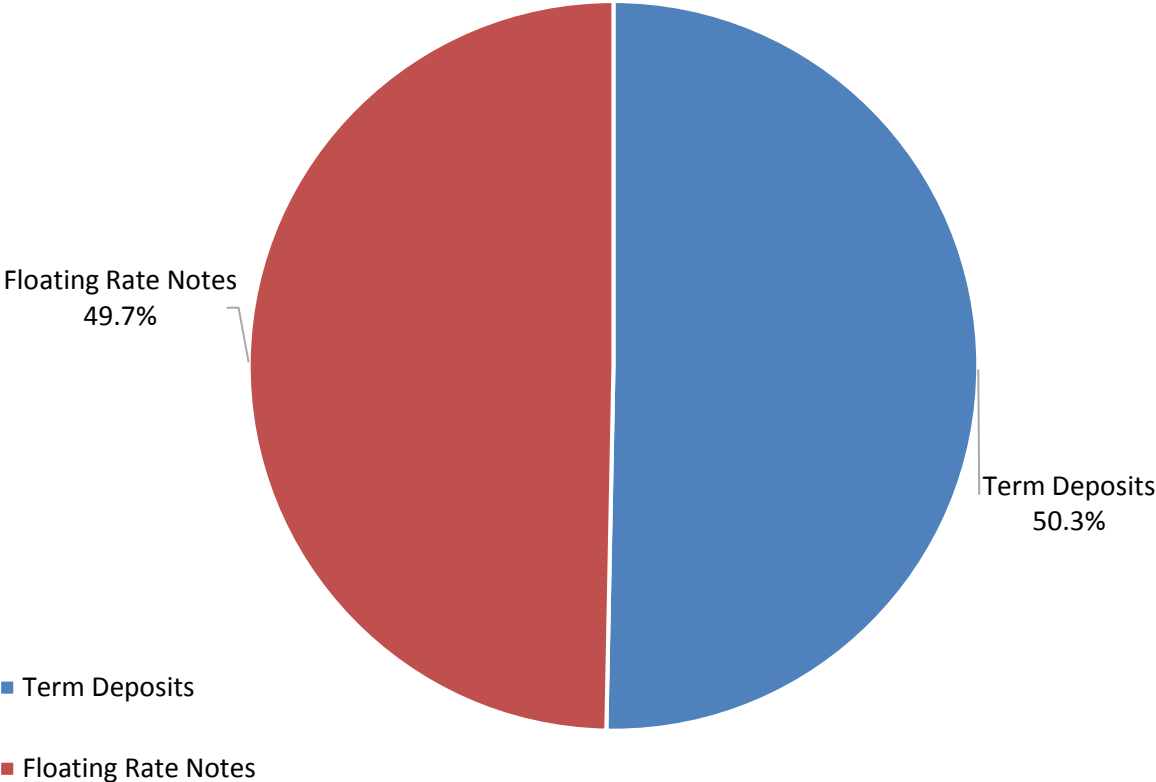
% Liquidity - Minimum Allocations



Risk Profile as at 30 June 2016



Investment Product Profile as at 30 June 2016



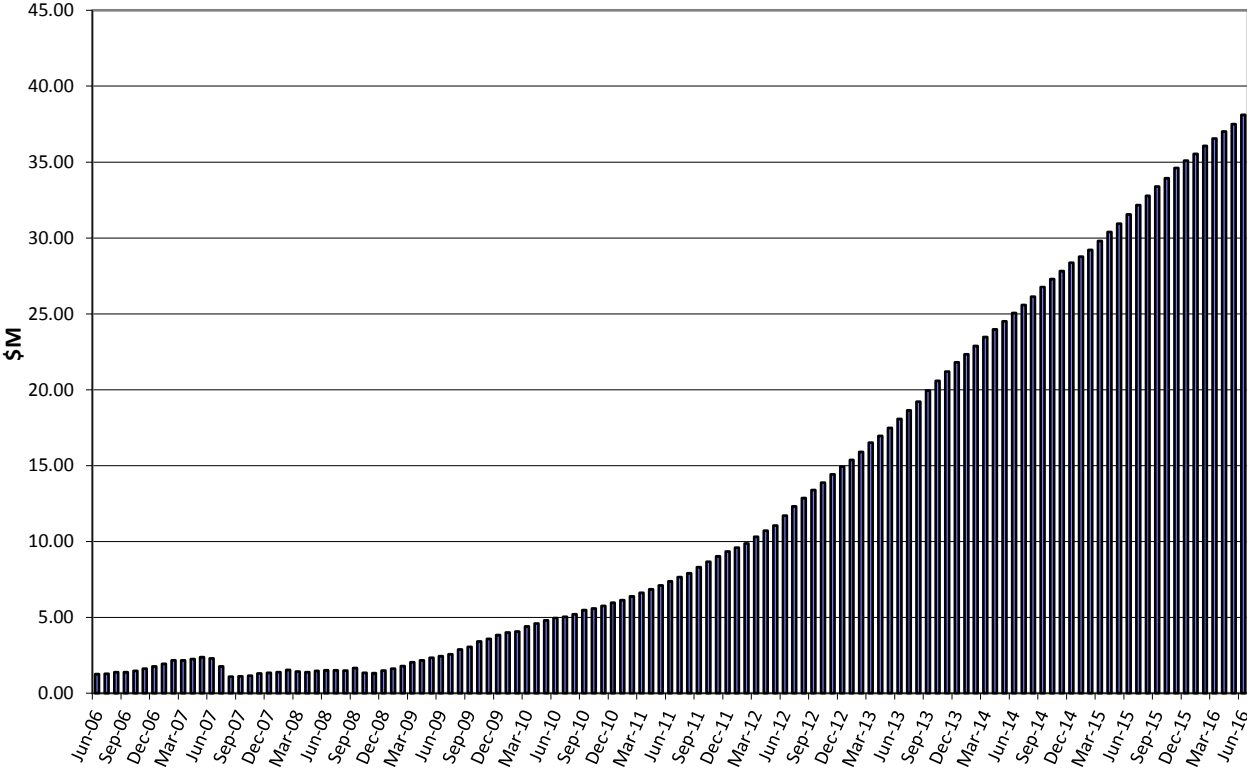
ATTACHMENT B

INVESTMENT AND CASH DISTRIBUTION BY FINANCIAL INSTITUTION

AS AT 30 JUNE 2016

Institution Category	Financial Institution	Amount \$M	Financial Inst. %	Institution Cat. %
Australian Big 4 Bank (and related institutions)	ANZ Bank	41.3	7.3	
	Commonwealth Bank-related:	109.0	19.3	
	<i>Bankwest</i>	30.0	5.3	
	<i>Commonwealth Bank</i>	79.0	14.0	
	National Australia Bank	79.0	14.0	
	Westpac Banking Corporation-related:	89.6	15.8	
	<i>St George Bank</i>	0.0	0.0	
	<i>Westpac Banking Corporation</i>	89.6	15.8	
Big 4 Total		318.9		56.4
Other Australian ADIs and Australian subsidiaries of foreign institutions	AMP Bank Ltd	5.0	0.9	
	Bendigo and Adelaide Bank	41.0	7.3	
	Bank Of Queensland	48.0	8.5	
	Members Equity Bank	17.0	3.0	
	IMB	7.0	1.2	
	Heritage Bank	2.0	0.4	
	Newcastle Permanent Building Society	22.0	3.9	
	CUA Limited	30.0	5.3	
	ING Bank	5.0	0.9	
	Greater Building Society	5.0	0.9	
	Bank of Communication	5.0	0.9	
	Rabobank	5.0	0.9	
	Suncorp Bank	40.0	7.1	
	Bank of China-Sydney Branch	5.0	0.9	
Royal Bank of Canada - Sydney	9.5	1.7		
Other ADI Total		246.5		43.6
Grand Total		565.4	100.0	100.0

Cumulative Outperformance over AusBond Benchmark - 2006-2016



Cumulative Outperformance over 30 Day BBR Benchmark - 2006-2016

